

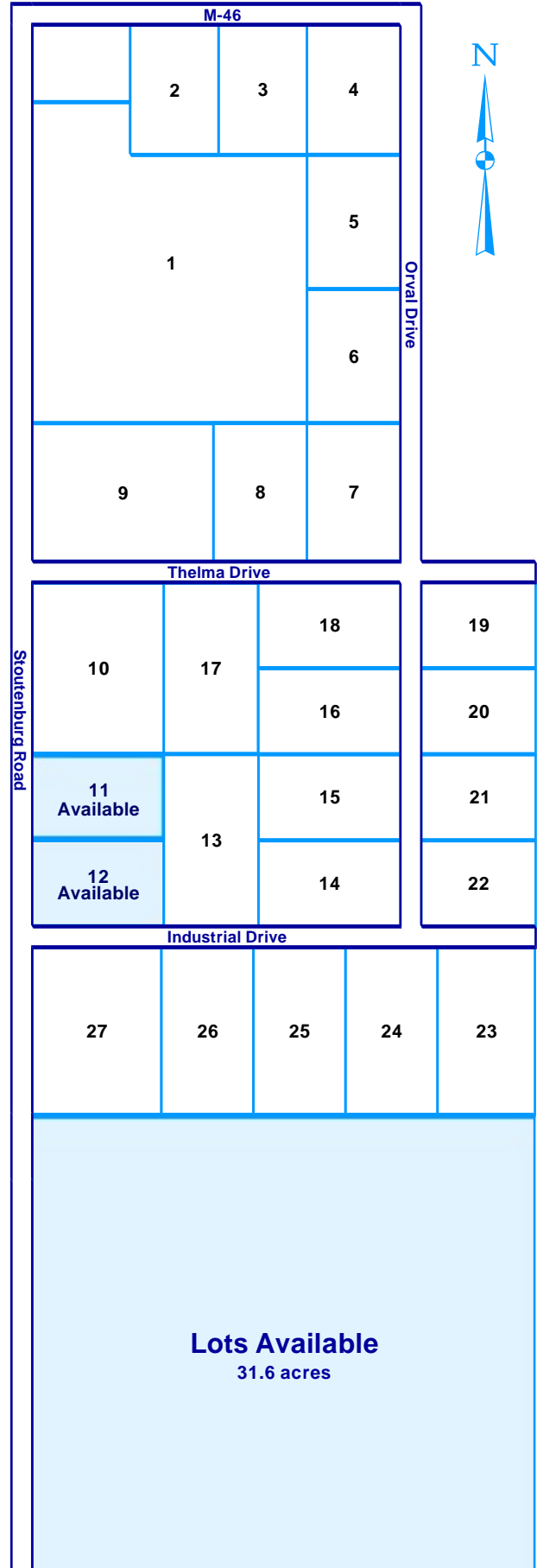
City of Sandusky Industrial Park

Utilities

Electric	DTE	Voltage: 277480
Sewer	Municipal	Line Size: 8"-10"
Telecom	SBC	Digital Switching Fiber Optics
Gas	SEMCO	Line Size: 6
Water	Municipal	Line Size: 8"
Zoning	I2	Heavy Industrial

Lot Information

1.	Sandusky WWTP	
2.	Martinez	
3.	S&S Wholesale	Retail Lumber
4-5.	Numatics, Inc.	Rubber & Plastic Parts
6-8.	Cinnabar, Inc.	Refurbish motor homes
9.	Breiten Lumber	Wood Pallets & Skids
10.	Buskirk VR Rush	Refurbish motor homes
13-17.	Numatics, Inc.	
18.	County Recycling	
19.	State of Michigan	Radio Tower
20-22.	G. Williams	Construction
23-25.	Extang, Inc.	
26-27.	Industrial Automated Design	



Contact

Mr. Lou Laponsie, City Manager
 26 W. Speaker St.
 Sandusky, MI 48471
 810-648-4444 (fax) 810-648-3959
 Email: sandusky@greatlakes.net
 City Website: <http://ci.sandusky.mi.us>